

# Bluewater 420 Raised Saloon - Specification

## Probably the most important buying decision you will ever make!

**Yes, you can buy a house, a car or all manner of other assets, but how often does your life and the lives of your loved family and friends depend on that decision?**

When you choose to go ocean cruising, the answer is every day.

Bluewater Cruising Yachts are custom designed and made for each individual owner with one over-riding criterion, the safety and comfort of those sailing aboard her no matter what the conditions they encounter.

Only a Bluewater can give you that feeling of confidence the moment you step aboard one the first time – for many a Bluewater owner that was their first impression “wow, this feels safe and solid compared to other yachts”.

And that feedback continues for as long as they sail aboard a Bluewater.

Then there are all the additional comforts built-in, because we listen. Every Bluewater built has been better than the one before because each owner provides us with feedback. One of the largest water tankages available in a cruising yacht of this size enables you to travel further and longer. You can even have all the luxuries of home, a built in laundry, a work bench and easily accessible stowage for priority or emergency items. You don't have to bend over and dig to find what you need, it is there, just where you need it because we have listened to what experienced cruisers have told us.

And because not all cruising is done in tropical climates Bluewater yachts have natural ventilation, and the option of both heating and air conditioning so you can be comfortable no matter where you go.

You will think about so many factors when making your decision and there are so many choices available. Put yourself in the picture, think about what you really want and what is really important to you. If you truly want to experience the ultimate freedom of being able to go wherever you want, whenever you want, then your choice has to be the Safety and Comfort that only a Bluewater can guarantee.

Let us impress you with a test sail, and let us introduce you to other Bluewater owners because if we tell you, well that's just us saying so, but if you hear it direct from a current owner and experienced ocean cruiser then you will get the unbiased truth.

When you visit our website [www.bluewatercruisingyachts.com](http://www.bluewatercruisingyachts.com) you will find all the information and resources to help you make that decision. Make sure you download our booklet “Are You Serious about Ocean or Coastal Cruising – Things You Need To Know” and please do contact us with any questions you have, anytime.

**Speak directly with David Bradburn the owner of Bluewater Cruising Yachts.**

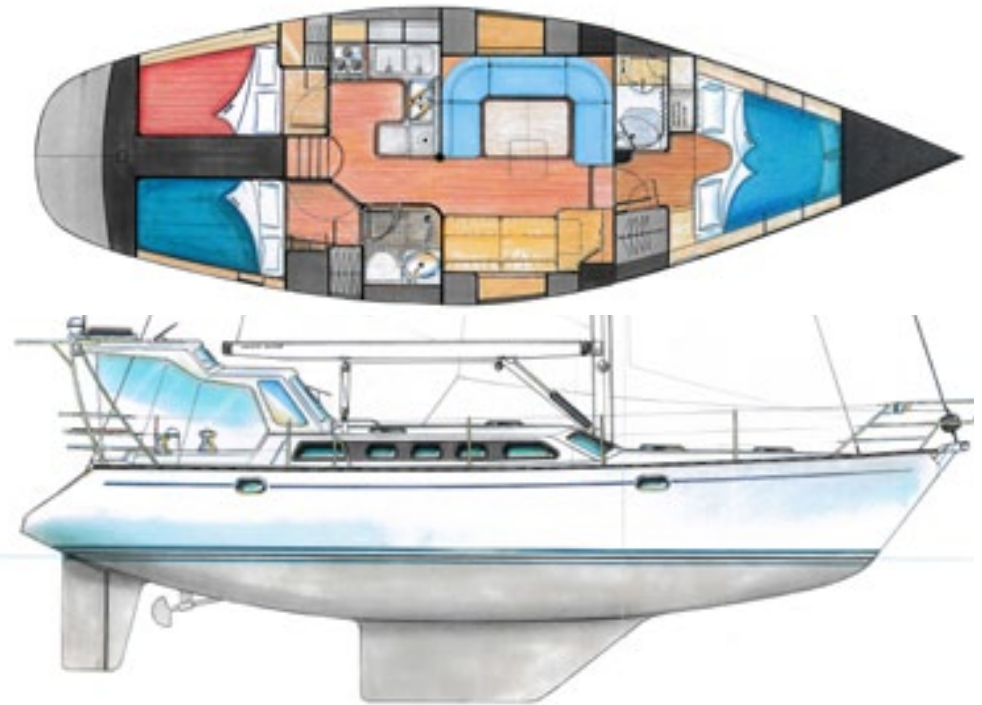
**You can contact David by email [david@bluewatercruisingyachts.com](mailto:david@bluewatercruisingyachts.com) or by calling 0412 656 271.**



# Bluewater 420 Raised Saloon - Specification

## Look at the possibilities you can have on your Bluewater 420

- Proven Seagoing Adams Design Cruising Hull – excellent load carrying for extended cruising, good allround sailing performance, excellent upwind
- Built to offshore survey (USL) specifications – integrity is built into every aspect
- Integral Keel – can't fall off, no leak issues, no cracking.
- Skeg Hung Rudder – maximum support and protection of rudder
- Standard Yanmar 55hp engine or a 75hp Upgraded Engine Package – giving more efficient cruising speeds and increased propulsion and acceleration for rough conditions.
- Lead Ballast – higher AVS and stiffness.
- Standard 900lb electric windlass or upgrade to HR2500 Horizontal windlass – used on vessels up to 55'. Easy to use manual backup.
- Standard pulpit or upgrade to optional bowsprit – extended 600mm forward of forestay enables gennaker to be flown unrestricted and on its own furler. Can accept latest designed anchor eg. Rocna 33kg.
- Standard 1400lbs Water Capacity – all built under saloon floor, epoxy lined and coated. Maximum capacity in its class.
- 450-620 lbs Fuel Capacity – 2.5mm 316 pressure tested, built to survey specifications.
- Solid Glass Hull (up to 38mm thick) – no concerns re: water absorption, core sheeting, impact resistant.
- Kevlar Reinforcing Forward Main Bulkhead – maximum impact resistance in case of collision.
- Collision Bulkhead & Watertight Main Bulkhead – extra security in case of collision / holing.
- 135° + AVS – very high stability making Bluewater 420 more forgiving and stable in rough conditions.
- 10-12m<sup>3</sup> Storage Capacity / Over 50 Lockers – when living aboard this is crucial.
- 6'7" Headroom Main Saloon – generous proportions and feeling of space.
- Flush Foredeck – easier to move around on in rough conditions.
- Bulwarks – Bluewater 420 Raised Saloon provides extra security and safer to move around on.
- All features of home built-in for long term cruising such as optional laundry - 3kg front loader, and work bench & tool storage even includes a built-in shed.
- Kingsize Owners V-Berth or Queensize Island Berth – large beds for maximum comfort, a home away from home.
- Deck Water Catchment – means more self sufficient and not relying on technology (watermaker).
- Up to 22 Opening Ports & Hatches – excellent ventilation even in the hottest conditions.
- Fully enclosed cockpit with optional hard dodger for added safety or to create a year round extra living room.
- Optional Integrated Davits / Solar Panel / Stern Seats – all the features needed for comfortable cruising.
- All Locker Lids Positive Locking – including floor inspection lids and seat/bunk top openings. These boats are built with the roughest conditions in mind.
- Optional Twin Living / Lounging Area – in all weather.
- Good Privacy & Visibility Below Deck – important when in close proximity to other boats.
- Optional Self Tacking Staysail Furler – a must for shorthanded, heavy weather sailing.
- Your choice of internal timbers, laminates or even a Corian® kitchen bench for added luxury and serviceability.
- 80 amp alternator or upgrade to large frame 130 amp alternator to provide more efficient battery charging at low revs.
- Engine exhaust highriser fitted - prevents water entering cylinders in rough conditions.



# Bluewater 420 Raised Saloon - Specification

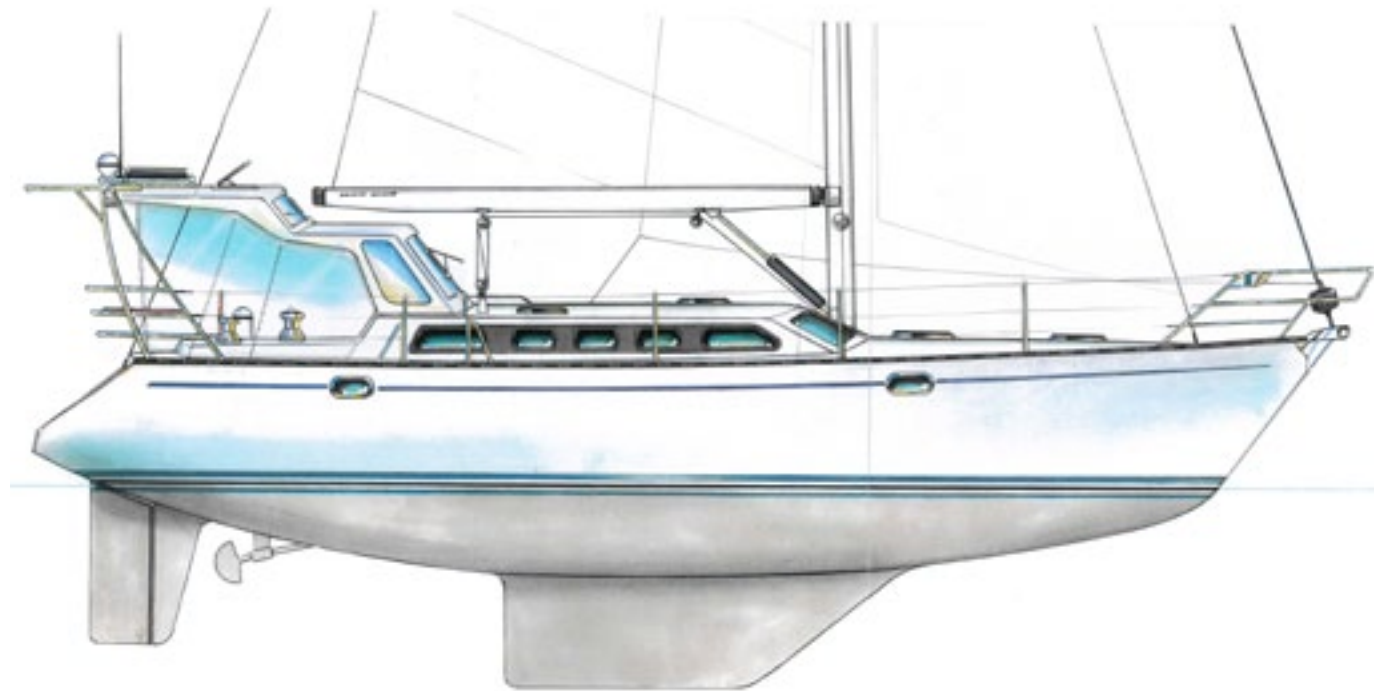
## DIMENSIONS

LOA	41'9"	12.72m
LWL	35'0"	10.67m
Beam	13'1"	3.99m
Draft	6'3"	1.90m
Displacement (Lightship)	27,017lb	12,170kg
Ballast	11,100lb	5,000kg
Aux.Power	55hp	
Freeboard Fwd	5'0"	1.52m
Freeboard Aft	4' 1½"	1.25m
Water	300gal	1,400lt
Diesel	100gal	450lt
<b>Sail Area</b>		
No.1 Genoa	571sq.ft.	53.04m <sup>2</sup>
Main	391sq.ft.	36.32m <sup>2</sup>
Spinnaker	800sq.ft.	74.34m <sup>2</sup>

## DESIGN DATA

Angle Vanishing Stability	135°
Sail Area/Displacement Ratio	18.5
Displacement/Length Ratio	255
Ballast Ratio	41%

NB. All dimensions and measurements above are approximate only



# Bluewater 420 Raised Saloon - Specification

## HULL

- Constructed in accordance with NSW Maritime USL Code Offshore 2C Category survey standard
- Solid GRP layup
- One piece moulding with integral keel and skeg
- All exterior surfaces isophthalic NPG gelcoat.
- Tie layer Derekane SPV1265 to guard against osmosis
- Sub laminate - orthophthalic unwaxed resin.
- Glass reinforcement:
  - Kevlar reinforced bow area
  - Topsides total 5400g - 4200g chopped strand, plus 2 layers 600 biax
  - Centreline/Keel total 9600g - 7200g chopped strand, plus 4 layers 600 biax

## DECK

- Laminate - 4200g total with 2 layers of 600g biax
- Core Material:
  - 20mm foam - cockpit, foredeck & roof
  - 18mm plywood - cockpit sole & winches
  - 3-4 layers 3mm coremat - sidedecks & roof

## RUDDER

- Glass reinforcement
  - 3600g chopped strand, 1 600 biax
- Shaft 50mm  $\varnothing$  316 s/s
- Lower bearing 44mm I/D
- Shaft termination - Immediately below deck

## HULL AND DECK JOIN

- External hull flange
- Bonded with glass reinforced filler 2400g CSM
- Aluminium toerail with fairleads

## BALLAST

- One piece lead casting of 4500kg
- Fitted internally
- Laminated over 3000g chopped strand, plus two layers 600 biax

## STRUCTURAL FOAM FLOORS

- Distribute keel loadings, strengthen hull & floor bearers
- Laminate - 50mm foam core/1800g CSM

## SKEG

- Filled GRP to make solid
- Plywood knees support 125 x 50mm skeg post
- Glass reinforcement - 3600g CSM

## MAST STEP AND COMPRESSION POST

### Mast Step:

- 3 transverse hardwood floors distribute loadings
- Hardwood mast step spans floors
- Laminate - 2400g CSM

### Compression Post:

- 100 x 100 x 6mm s/s
- Freestanding bolted with 12mm s/s bolts

## CABIN SOLE

- 15mm A-Bond plywood
- Epoxy coated, screwed and glued
- Access to bilges throughout
- Inspection lids all lockable

## RIGGING ATTACHMENT

- Chainplates - 50 x 12mm 316 s/s with 3mm s/s backing plates
- Knees - 25mm plywood 4200g CSM laminate
- Split backstay bolted through transom
- Forestay attached to bowfitting
- Inner forestay attached to collision bulkhead

## BULKHEADS

- Forward collision bulkhead
- Semi watertight main bulkhead
- Varnish grade hoop pine 12-15mm
- Glass reinforcement - 2400g CSM

## FUEL TANK

- Capacity - 450 lt
- Location - Aft berths
- 2.5mm 316 s/s
- Inspection lid fitted
- Sufficient baffles fitted
- Inlet  $\varnothing$  38mm
- Outlet  $\varnothing$  10mm
- Breather  $\varnothing$  10mm
- S/s bolts secure tanks in place

## WATER TANKS

- Capacity - 1,400lt
- Integral tanks built within structural floors
- Sufficient baffles fitted
- Tanks are lined with 4 coats of epoxy
- Inspection lids fitted
- S/s drinking water tank fitted

## HOLDING TANK

- Integral - Approx 150lt capacity (depending on location)
- Rear Head - Toilet waste only
- Manual discharge overboard and pump out station



# Bluewater 420 Raised Saloon - Specification

## ENGINE

- 4 cyl, freshwater cooled, 55hp Yanmar direct drive 2.64:1 with deluxe instrument panel
- 80amp alternator
- Engine beds
  - Seasoned hardwood
  - Glass reinforcement - 3600g CSM
- Shaft 316 s/s
  - 38mm ø
  - Keyways fore and aft
- Bronze propeller skeg laminated 4200g CSM
- 18" & 13" fixed 3 blade propeller
- Polyflex flexible coupling
- PSS shaft seal
- Bronze ball valves used throughout
- Flexible exhaust hose to outlet
- Exhaust highriser fitted
- Fibreglass water lock
- Raw water inlet filter
- Control mechanism (forward, neutral, reverse) pedestal mounted
- Racor fuel filter
- Instrument panel positioned in cockpit
- Engine exhaust fan
- Accoustic insulation

## STEERING

- Drag Link System - 3 shaft bearings
- Bronze lower bearing
- Delrin middle bearing glassed 3600g CSM
- Machined housing incorporates lip seal, roller bearing race which takes rudder load
- 36" wheel

## PLUMBING AND FIXTURES

- Built in deck drain diverter
- Through hull fittings all bronze with double s/s hose clamps
- 12-19mm ø PVC hose for freshwater system
- 38mm ø tank inlet, head outlet
- Filter in line from s/s freshwater tank to manual galley pump
- Separate shower sump fitted with electric Whale Gulper pump
- Johnson pressurised freshwater system with Whale footpumps for backup
- 1 Whale Gusher Titan manual bilge pump
- 1 Whale 9000 electric bilge pump
- Whale hot and cold swim platform shower
- 50lt hot water system

## FRIDGE AND FREEZER

- Ozfridge 12v/240v system installed with regulator
- Capacity - Approximately 120lt
- 75mm foam insulation with top opening lid

## ELECTRICS

- 3 x 12v electrical supply
- 3 batteries: 1 engine starting
  - 2 x 200 amp AGM deep cycle batteries
- Mastervolt control panel:
  - 20 circuit breakers and switches
  - Custom mimic panel
  - Auto. Bilge Pump Switching
  - 2 VDO fuel tank gauges
  - 3 VDO water tank gauges
- Navigation lights
- 12v lighting - cabin and bunk lights throughout
- 3 x 12v outlets
- ICOM VHF radio
- Shore Power - 3 outlet
- Autohelm ST60 Speed/Depth/Wind

## ACCOMMODATION

Choose from a two or three cabin layout to our standard design. This designer interior features rounded corners, flush fitting overhanging cupboards for maximum storage and drawers on runners.

The yachts interior is built primarily from cherrywood or beech faced plywood with matching veneers wherever possible. All joinery is constructed in accordance with the best yacht practices with visible fastenings reduced to a minimum. Ventilation is provided where necessary.

## UPHOLSTERY

All settee and berth upholstery supplied. Covered in fabric to owner's choice from standard range. Custom made saloon seating with lumbar support uses hard and soft foam for added comfort.



# Bluewater 420 Raised Saloon - Specification

## FITOUT MATERIALS

- Bulkheads - faced plywood
- Joinery - solid timber, faced plywood
- Cabin Sole - teak and holly veneer
- All inspection/access lids positive locking
- Toilet - moulded fibreglass
- Cabin Hull Lining - vinyl covered ply with timber slats
- Saloon Hull Lining - timber slats
- Headliner - vinyl covered ply with timber cover strips
- Hanging Lockers - flowcoated & epoxied
- Cabin Side Liner - vinyl covered ply
- Galley Bench Top - plastic laminate
- Galley Cupboards - plastic laminate on shelves
- Satin finish - varnish
- Lockers - flowcoated, epoxied
- Latches - silver pushbutton type
- Cupboard Doors - veneered edges in timber frame
- Door Handles - chrome plated brass
- Stormboard - 10mm acrylic

## Forepeak

Storage cabin includes: partition separating sail stow to starboard, stowage bin and bench to port, hanging space for sheets, warps, etc, speckle flowcoat finish. (Forward Head Optional Extra)

## Owner's Cabin

Double berth extends to port with cupboard and shelf above, stowage bins underneath, hanging locker, bureau and shelf cupboard to starboard.

## Dinnette

U-shaped, lockers underneath and behind, overhanging cupboards behind and in forward corner, fixed height table.

## Settee

Lockers underneath and behind, overhanging cupboards behind and in forward corner.

## Galley

Timber surround on cupboard doors, overhanging bench, 4 drawers, overhanging cupboard, top opening fridge/freezer, plastic laminate faced bench top, shelves, s/s stove surround, deep twin bowl s/s sink, Force 10 LPG 2 burner stove with oven and griller, chromed flickmixer taps & drinking freshwater footpump.

## Navigation Area

1/2 chart size to almost full size (depending on layout), piano hinged lid, circuit board, electronics, radio beside chart table, small cupboard underneath, bench seat.

## Head includes

Vanity with built-in mirror, Par Brydon manual toilet, timber trimming, flush fitting teak grate, chromed flickmixer tap shower fitting, GRP sink.

## Port Aft Cabin

Single or double berth, stowage below, depending on layout chosen may have cupboard and hanging locker space.

## Starboard Aft Cabin

Double berth, with dressing and hanging locker, battery box and stowage underneath or aft head and large cockpit locker.

## DECK FITTINGS

- Edson draglink wheel steering
- S/S emergency tiller
- Plastimo 130 Compass
- Pushpit and pulpit with 3 lifelines
- Twin roller bow sprit incorporating forestay
- 6 staunchions
- 2 side access gates
- 6 x 300mm mooring cleats
- Deck Hardware: Ronstan
  - 2 x 3.5m genoa tracks with cars
  - Adjustable mainsheet traveller
  - 2 x 5 sheet organisers
- Stainless steel handrails on cabin top
- 10mm acrylic windows
- 2 x 5 bank Spinlock jammers
- Goyot deck hatches: 

500 x 500	2
450 x 320	2
- Goyot Side Cabin Hatches: 417 x 272 6
- Cockpit Portlights: 375 x 175 2
- Andersen Winches: 

52ST	2
40ST	3
- 2 winch handles and pockets
- Fuel, water and waste deck fillers
- S/S swing down stern ladder
- 900lb electric anchor windlass
- 24kg plough anchor with 70m x 3/8" chain
- Lockers - Anchor, cockpit and lazarette
- Teak laid extended boarding platform
- Spray Dodger

## MAST AND RIGGING

- Deck stepped
- Double spreader mast 6061T6 grade approximately 230 x 160 x 8.1 kg or equivalent
- Removable Inner-forestay
- Slab reefing 2 reefs
- Boom vang
- 316 s/s standing rigging
- Running rigging lead to cockpit
- Profurl furling system

## SAILS

- 1 fully battened Mainsail 9.5oz Dacron with 2 reefs and sail cover
- Fitted with mainsail batten cars and slides
- 1 Furling Genoa 130% 8oz with suncover

## HULL PREPARATION

- 2 coats International HT9000 epoxy resin
- 3 coats International Interprotect epoxy primer
- 3 coats International antifouling
- Polyurethane lines in your colour to our standard design



# Bluewater 420 Raised Saloon - Specification

## STANDARD PRICE

**\$821,425.00 inc GST**

July 2022

## WARRANTY

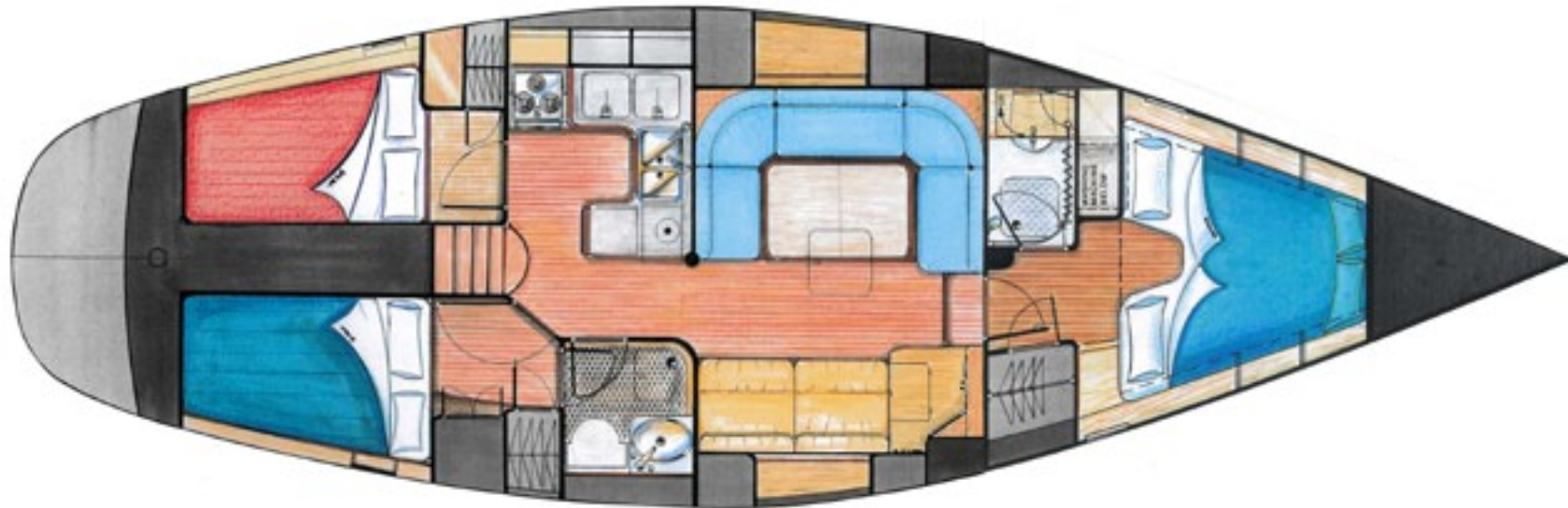
- Lifetime structural guarantee

## NOTES

- Dimension and sketches shown are approximate only and may include optional equipment. Please enquire further for optional equipment prices and specifications
- Bluewater Cruising Yachts Pty Ltd reserves the right to change plans, specifications, materials and suppliers without notice
- Prices quoted are inclusive of the GST and are ex factory



# Bluewater 420 Raised Saloon - Specification

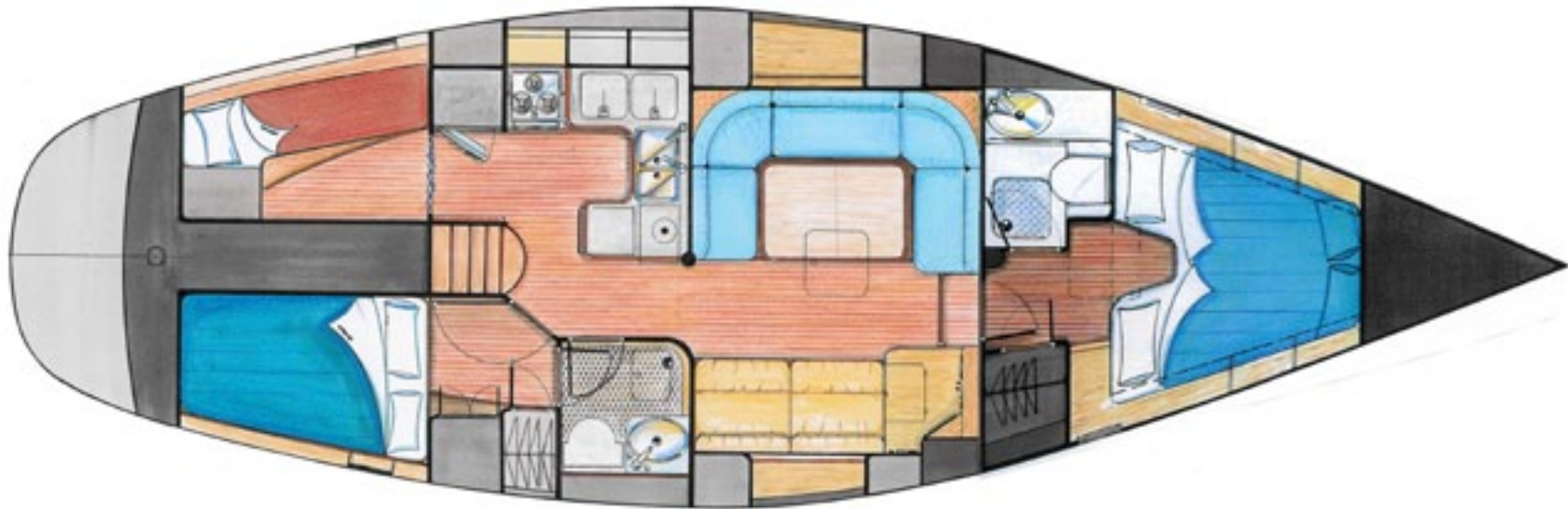


3 Cabin / Utility Head Storage / V-Berth





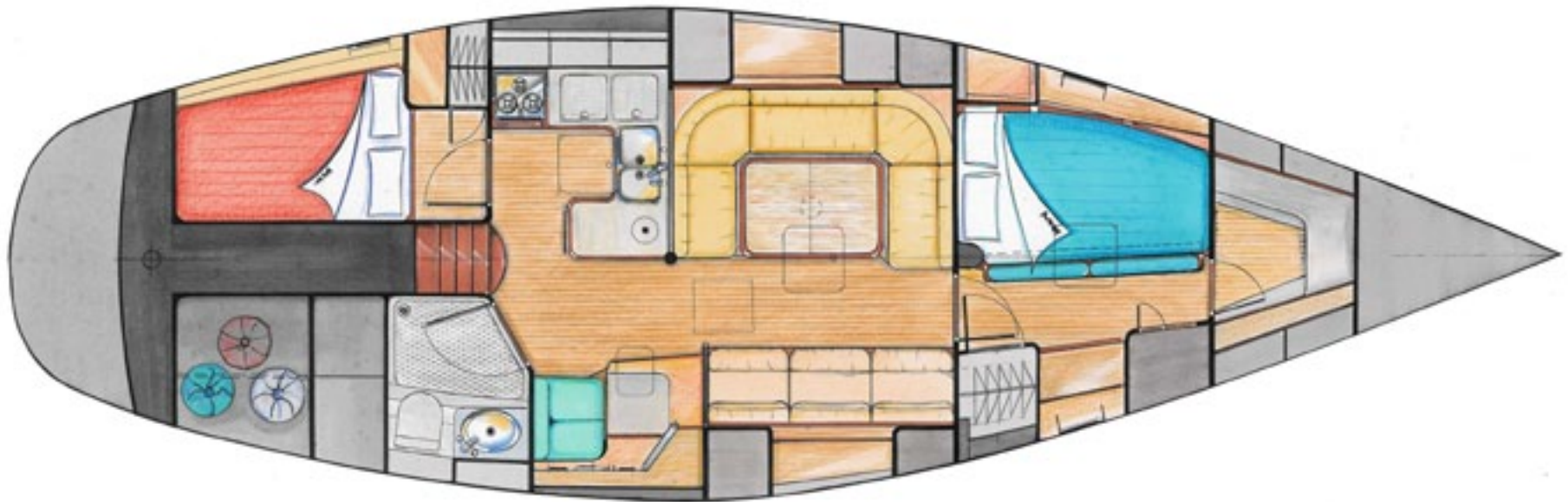
# Bluewater 420 Raised Saloon - Specification



2 1/2 Cabin / V-Berth / Large Galley / Fwd Head



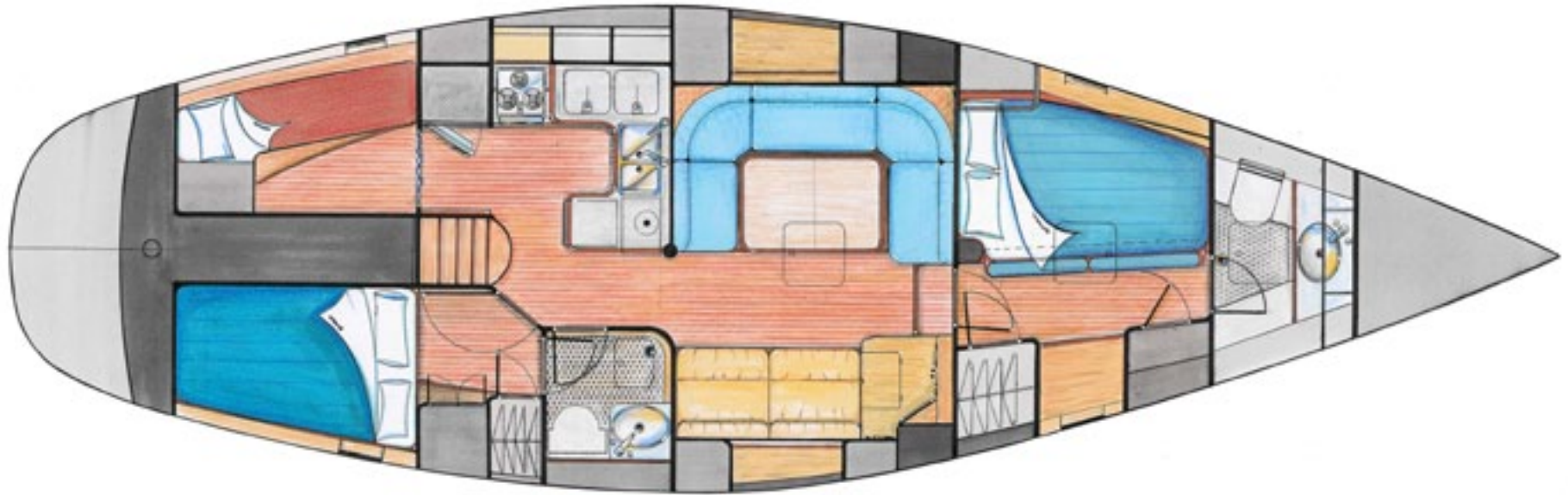
# Bluewater 420 Raised Saloon - Specification



2 Cabin / Fwd Storage Cabin



# Bluewater 420 Raised Saloon - Specification



2 1/2 Cabin / Large Galley / Fwd Head

